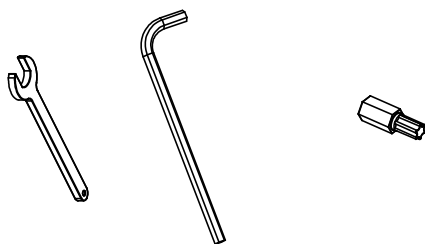

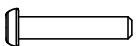
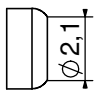
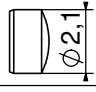




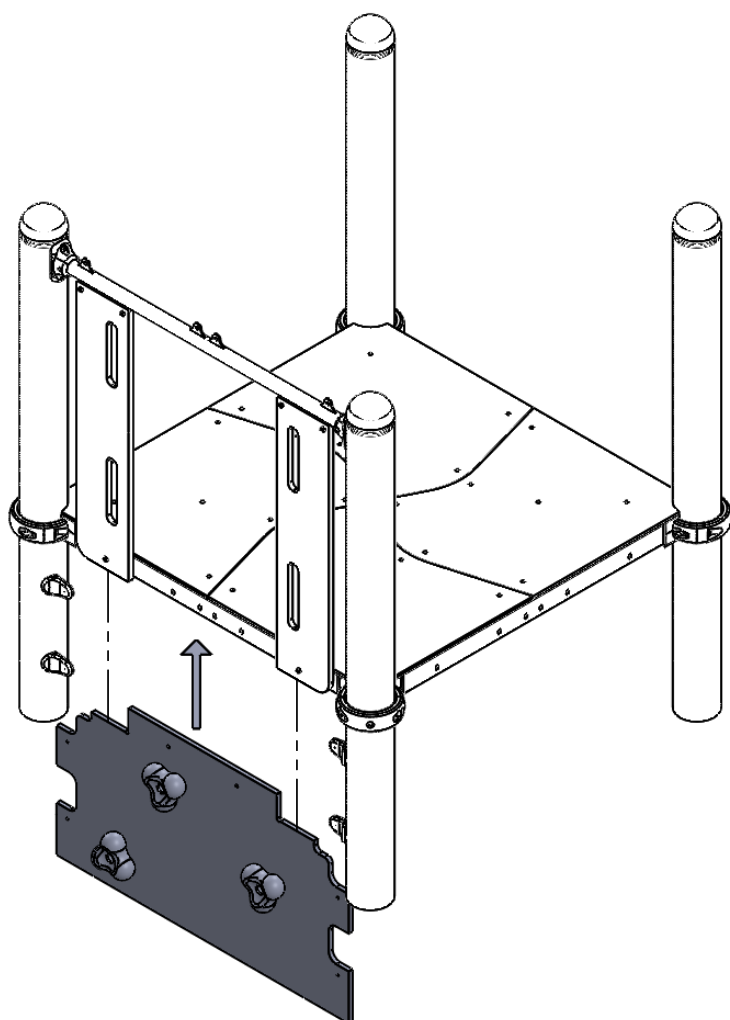
# INST\_12\_50



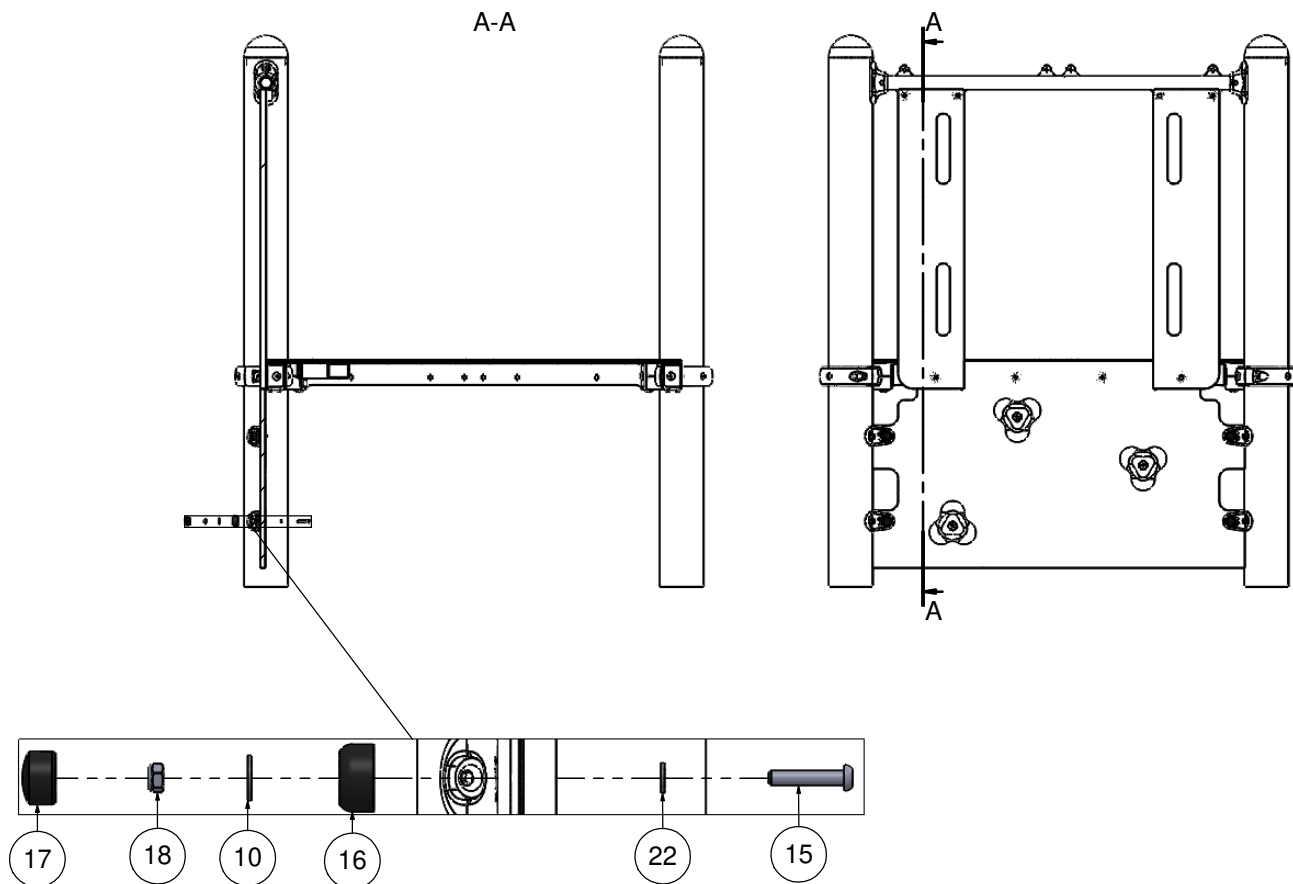
Nr. 10   Nr. 4   Nr. T30

1

Nr	Σ	Element		
10	6		DIN 9021	6x18
15	6		ISO 7380	M6x30
16	6		-	K1_d21_B
17	6		-	Z1_d21_B
18	6		DIN 985	M6 (OC)
22	6		DIN 125	6x12



2



3

