

INST_12_17

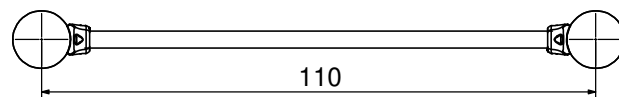


1

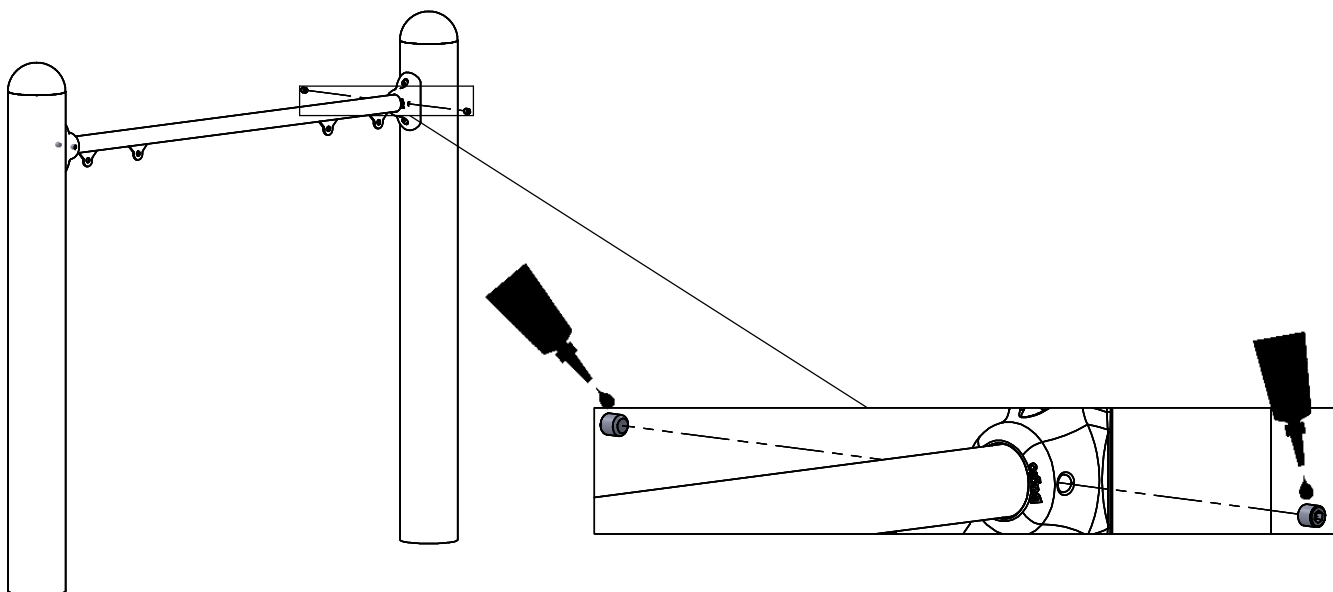
Nr. 4, 5 Nr. T30



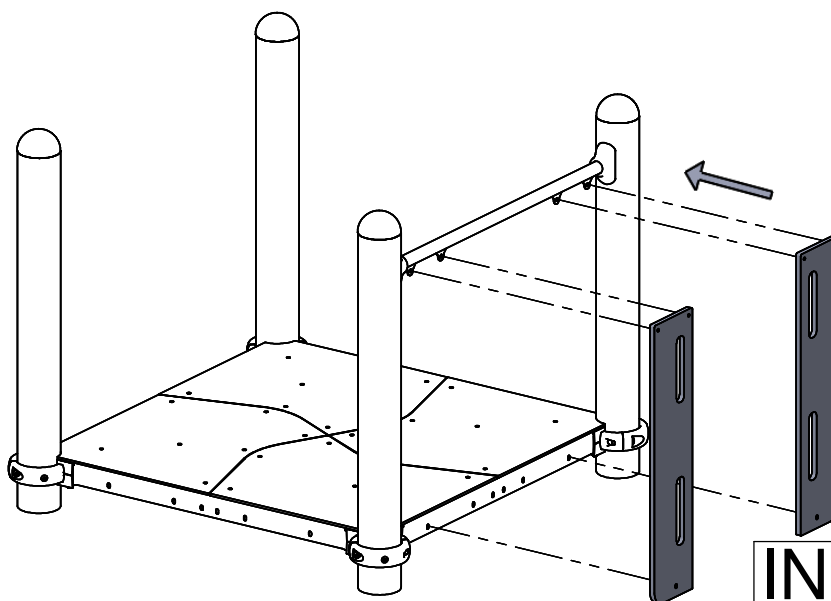
Nr	Σ	Element		
10	6		DIN 9021	6x18
15	6		ISO 7380	M6x30
16	6		-	K1_d21_B
17	6		-	Z1_d21_B
18	6		DIN 985	M6 (OC)
22	6		DIN 125	6x12
58	1		-	LOCTITE



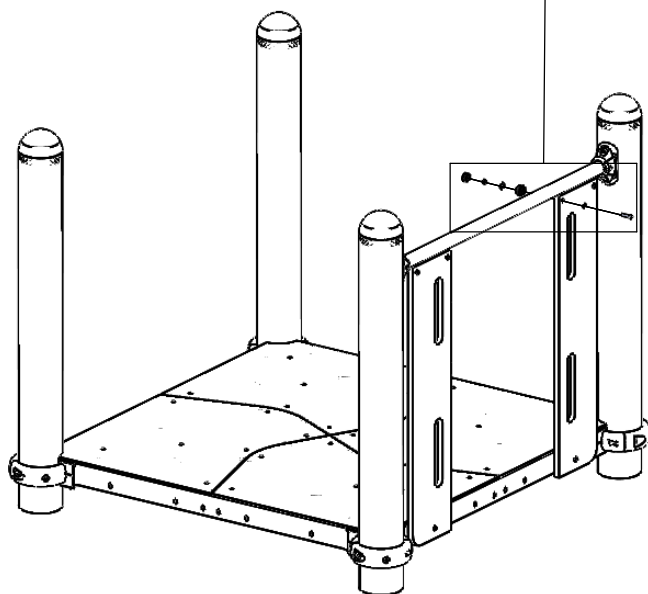
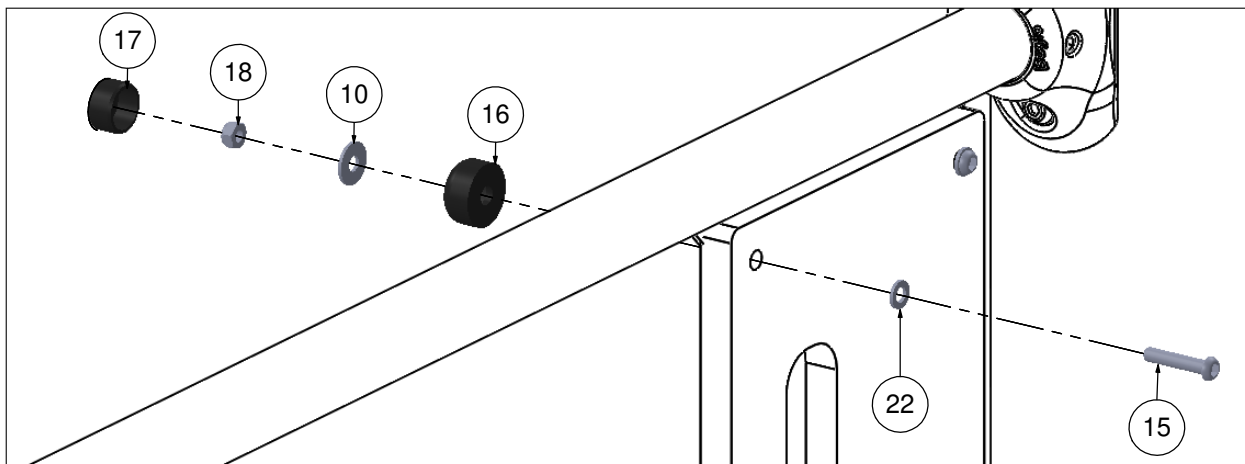
2



3



4



5

