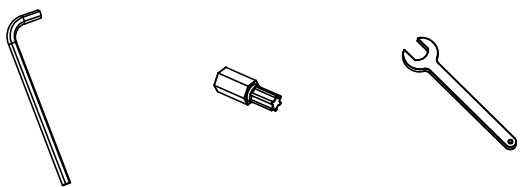
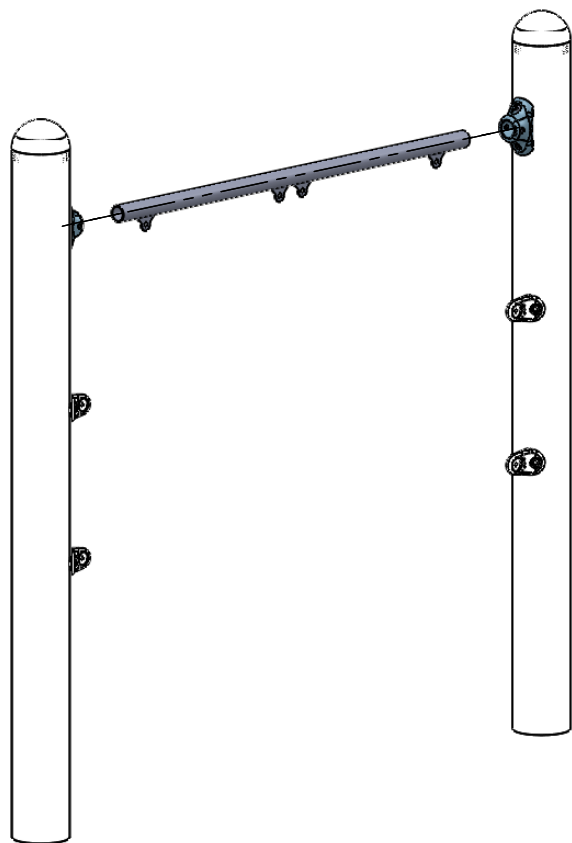



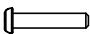
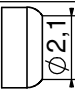
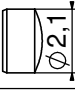


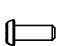

INST_12_66

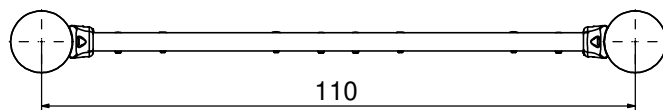


Nr. 4, 5 Nr. T30 Nr. 10

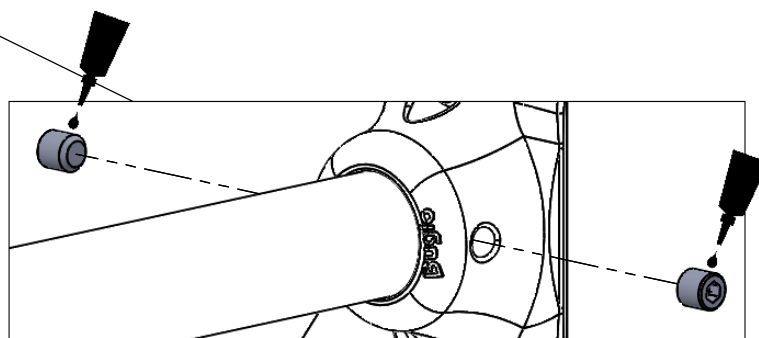
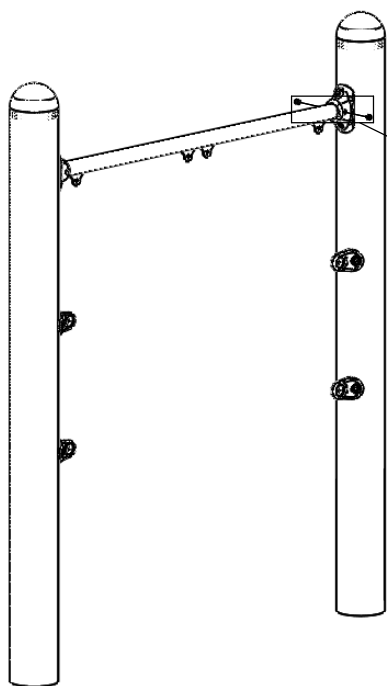
1



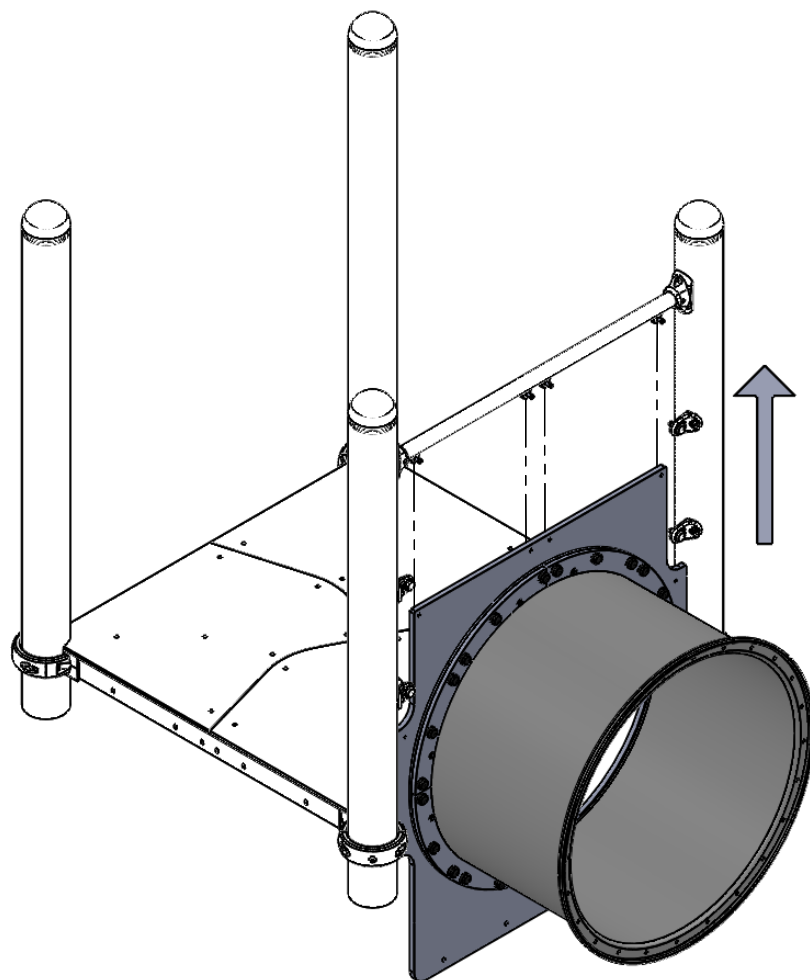
Nr	Σ	Element		
10	12		DIN 9021	6x18
15	8		ISO 7380	M6x30
16	12		-	K1_d21_B
17	12		-	Z1_d21_B
18	12		DIN 985	M6 (OC)
22	12		DIN 125	6x12
25	4		ISO 7380	M6x35
58	1		-	LOCTITE



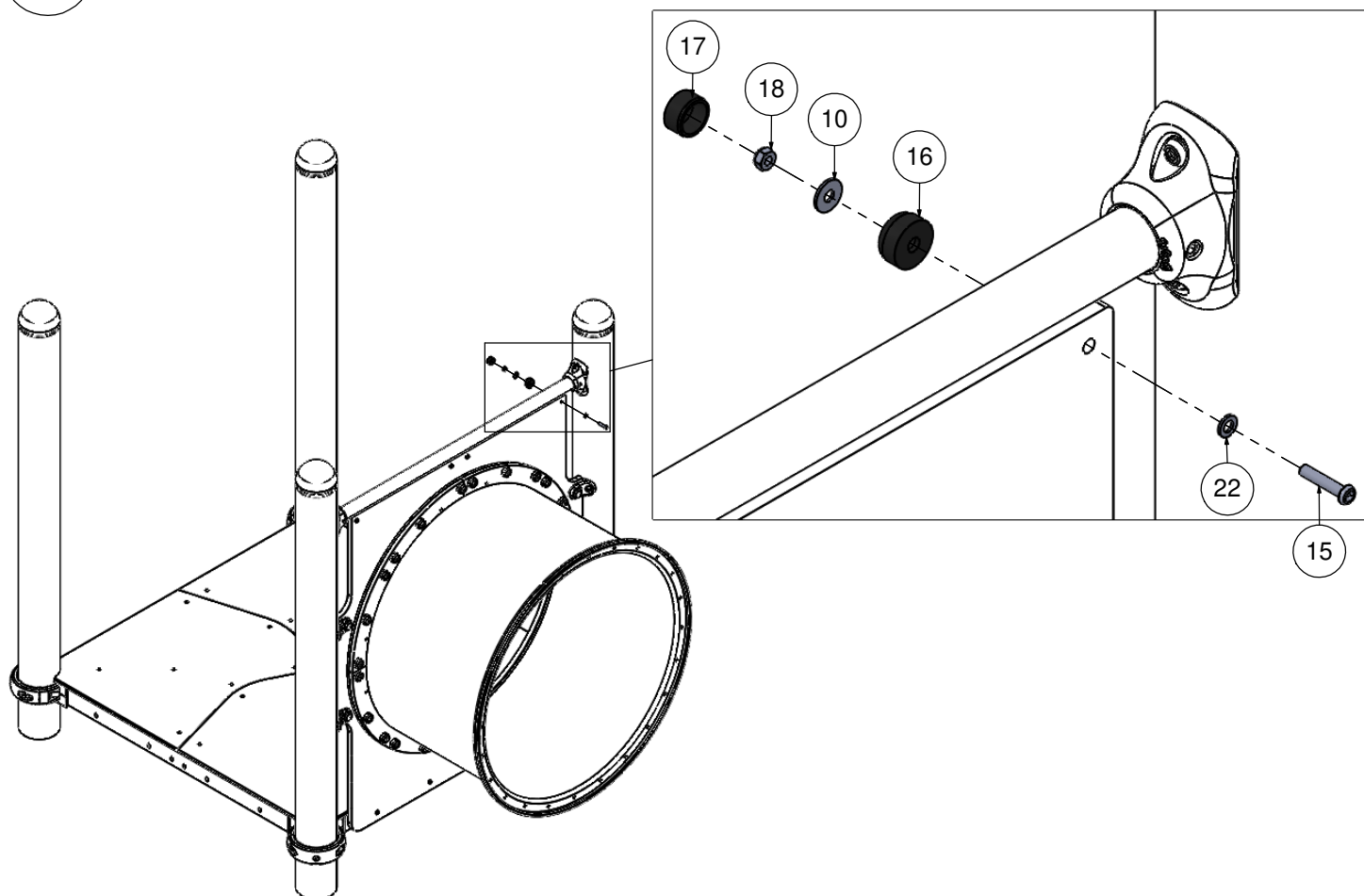
2



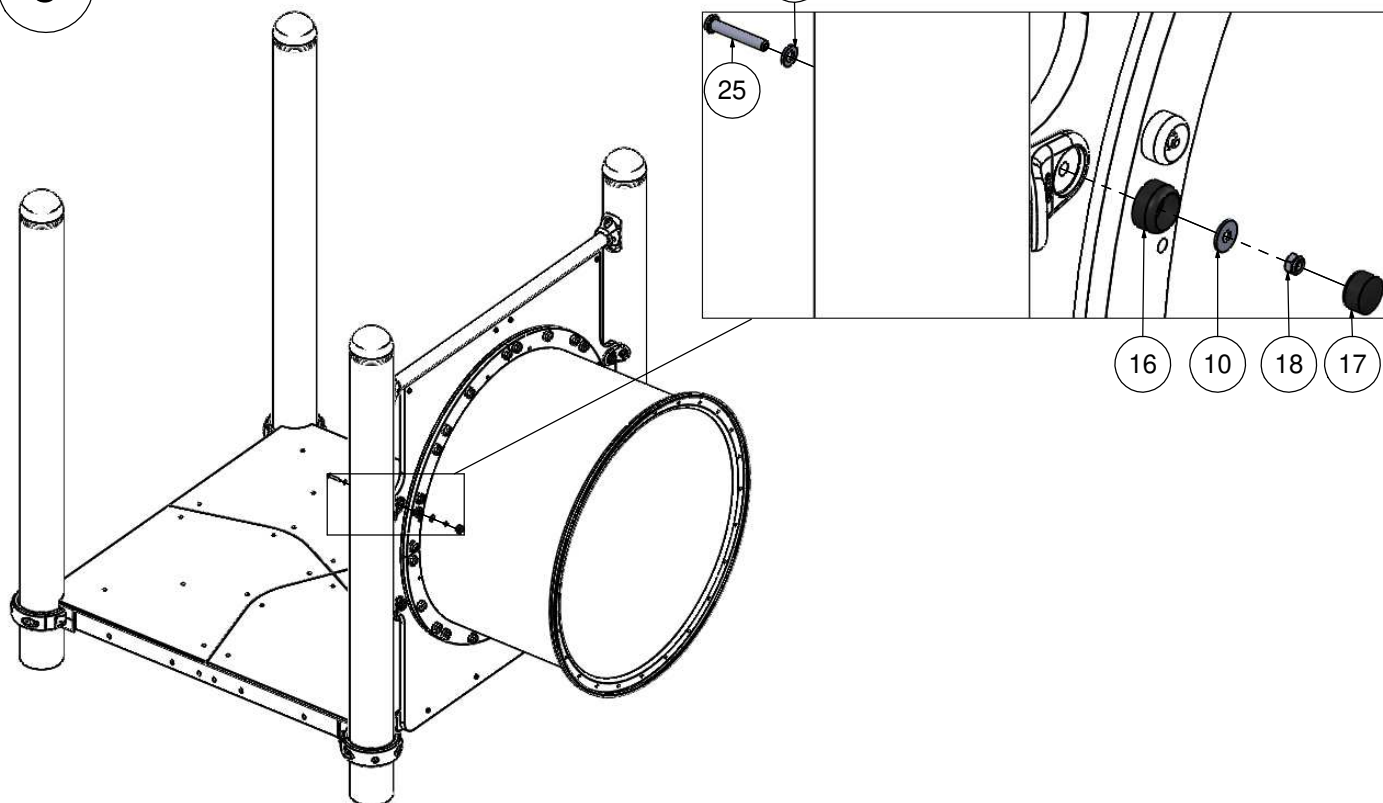
3



4



5



6

