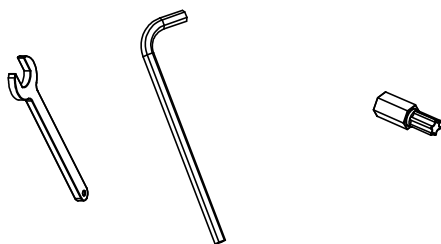

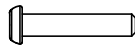
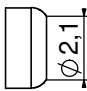
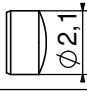




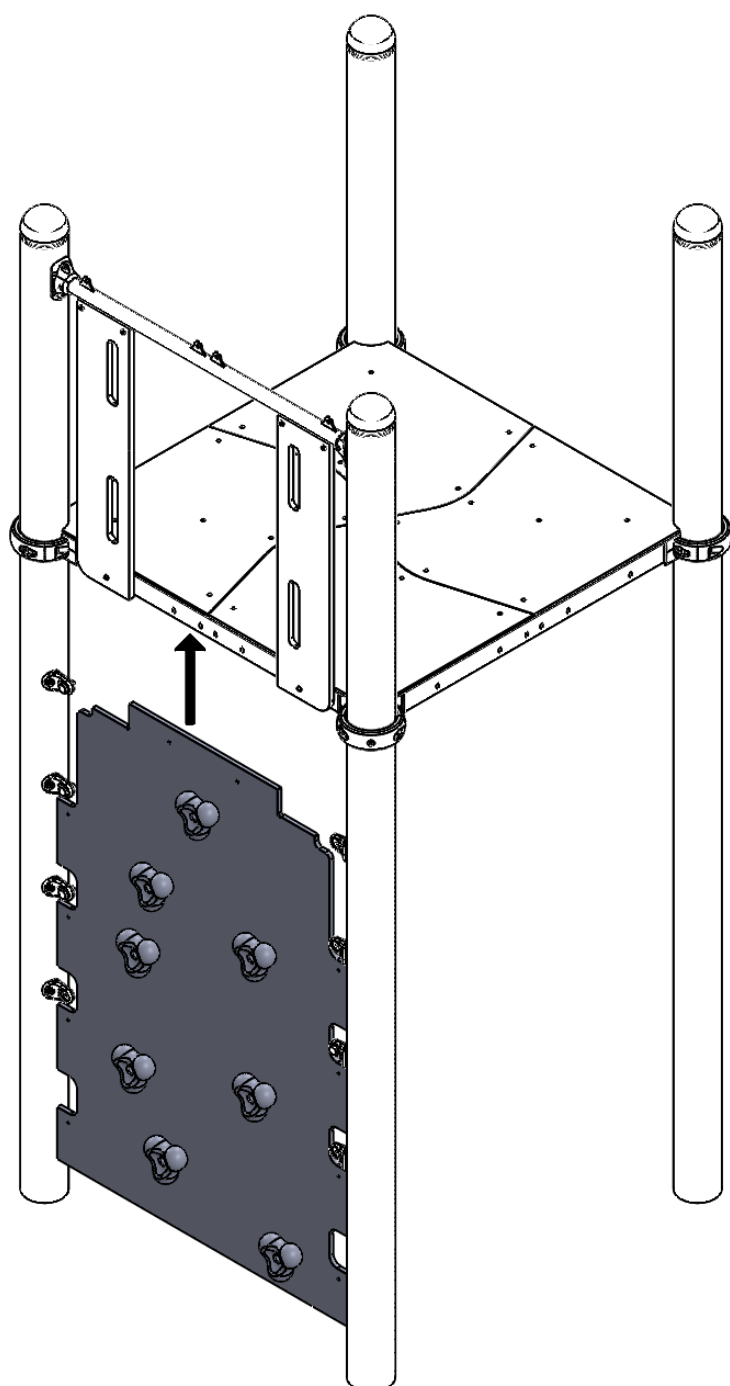
INST_12_53



Nr. 10 Nr. 4 Nr. T30

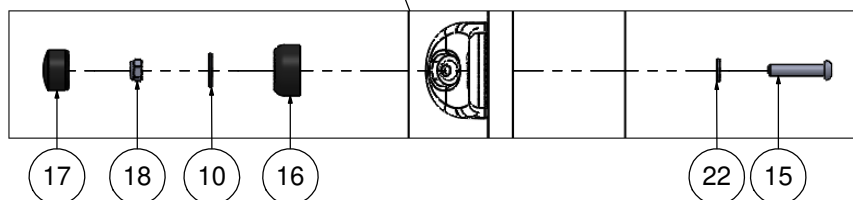
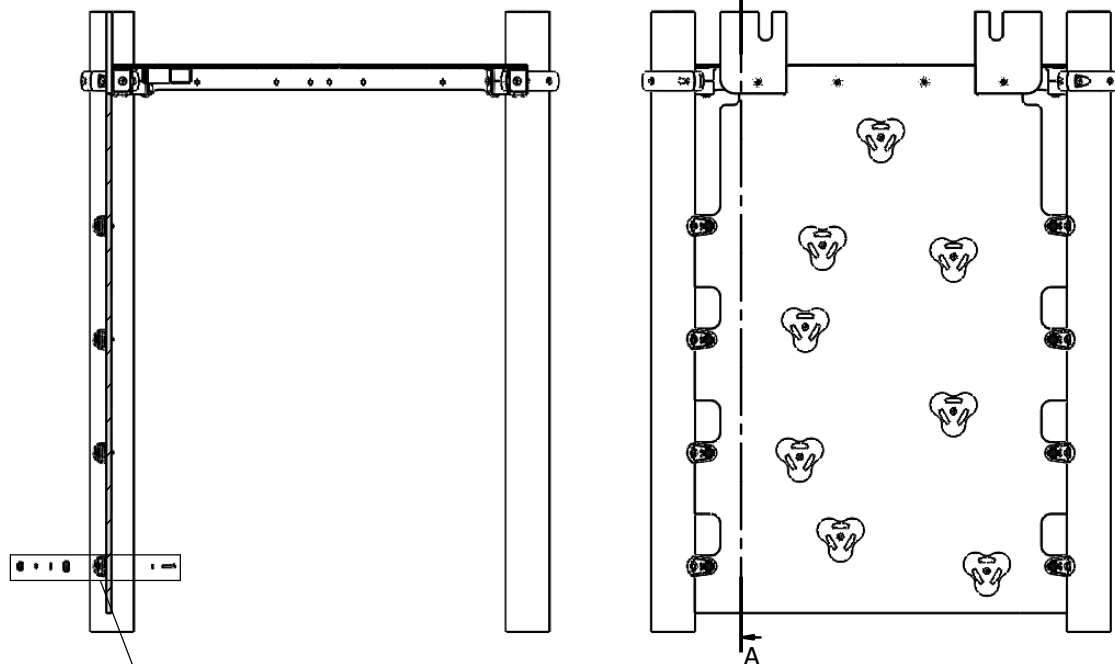
1

Nr	Σ	Element		
10	10		DIN 9021	6x18
15	10		ISO 7380	M6x30
16	10		-	K1_d21_B
17	10		-	Z1_d21_B
18	10		DIN 985	M6 (OC)
22	10		DIN 125	6x12



A-A

2



3

