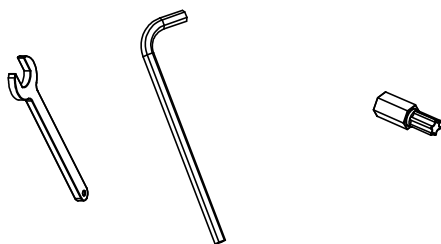

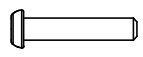
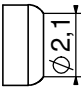
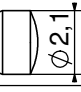


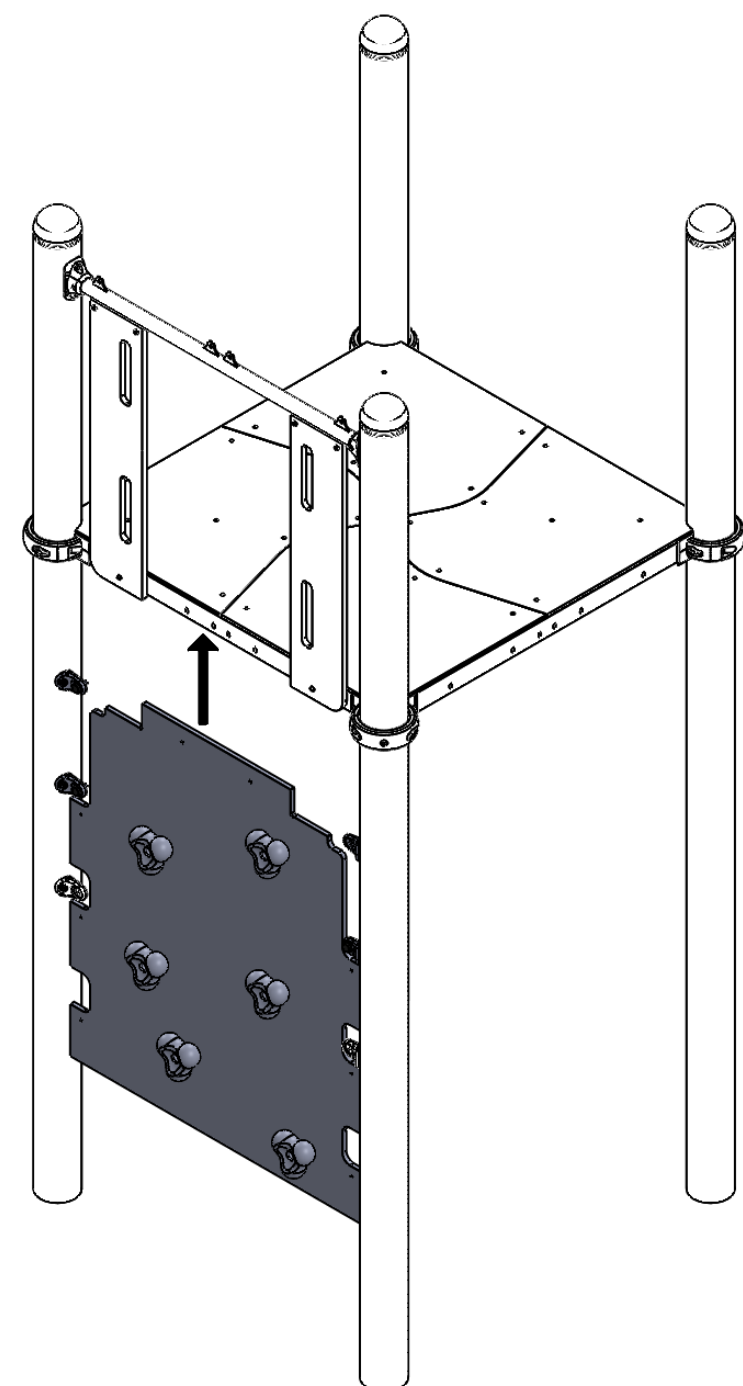


# INST\_12\_52



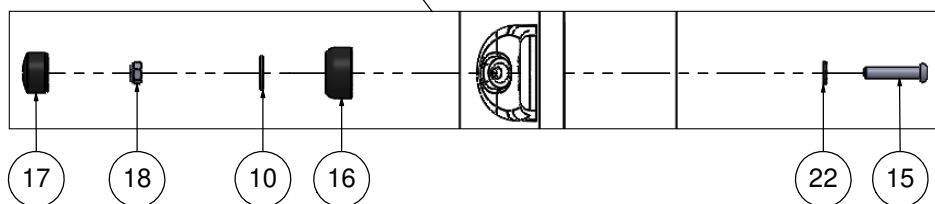
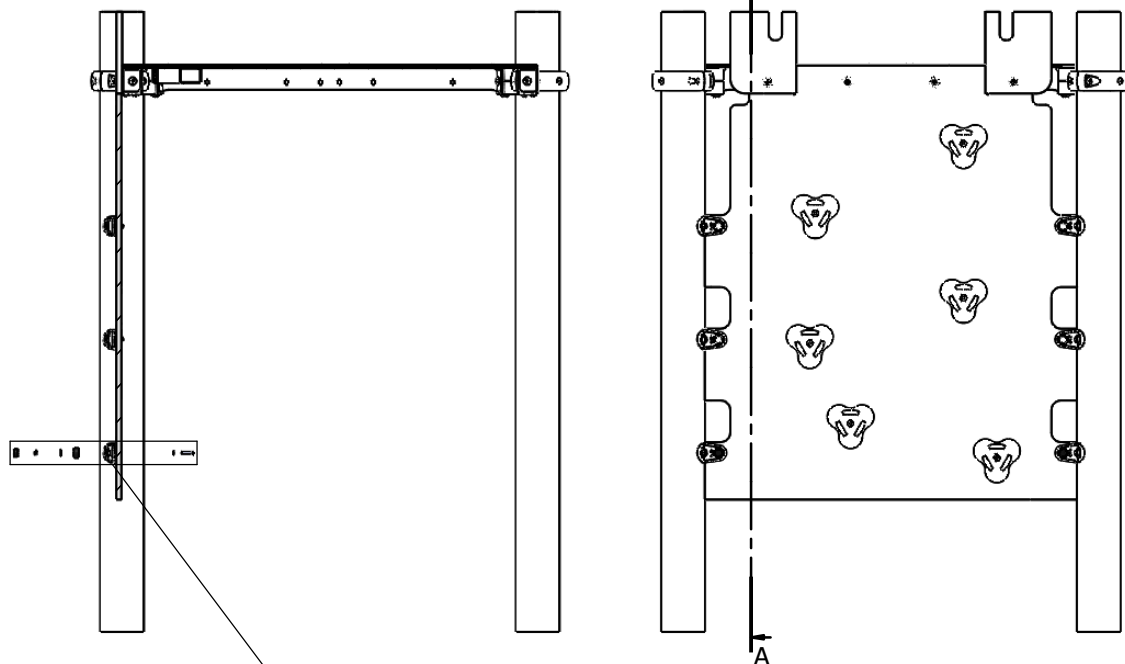
Nr. 10    Nr. 4    Nr. T30

Nr	Σ	Element		
10	8		DIN 9021	6x18
15	8		ISO 7380	M6x30
16	8		-	K1_d21_B
17	8		-	Z1_d21_B
18	8		DIN 985	M6 (OC)
22	8		DIN 125	6x12



2

A-A



17

18

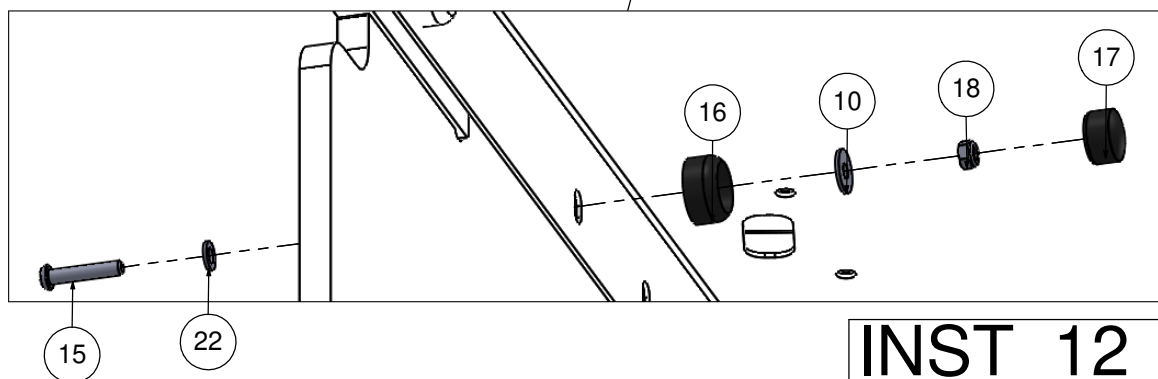
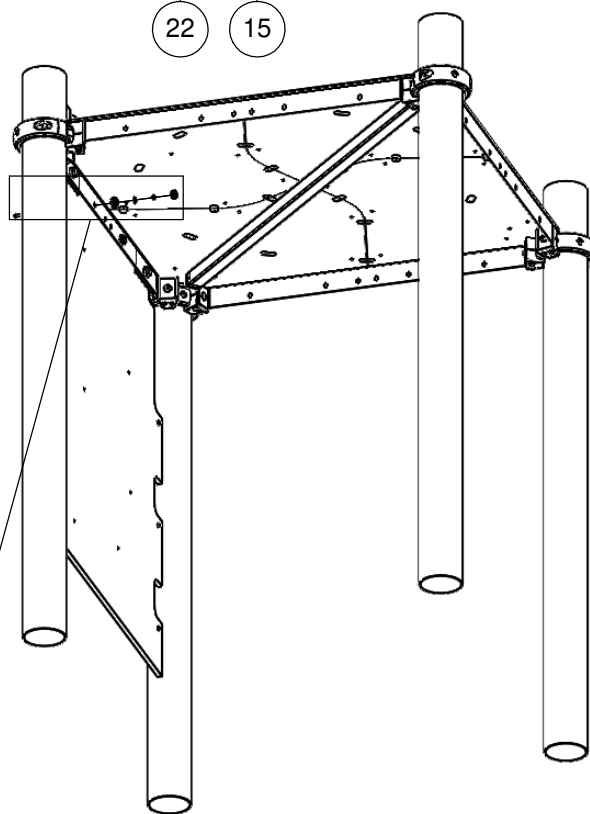
10

16

22

15

3



15

22

16

10

18

17